

# Valley News

## Term 2



**Yvette Swaalf PRINCIPAL**

Dear families

Welcome to the final newsletter for Term 2. It has been a busy and exciting term full of activities, excursions and learning. There have been many initiatives and successes across the school community in the recent weeks, some of which we are looking forward to sharing with you in this update.

### Senior students

Congratulations to the students for striving towards academic success. I would like to take this opportunity to recognize the following four year 12 students who have been successful in gaining traineeships and further study opportunities:

- Aleeya Lyell-Kaaho, who gained an apprenticeship in Hairdressing.

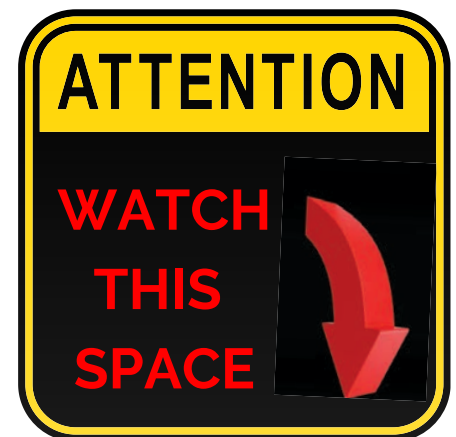
- Shannon Newton, who gained a traineeship in Disability Care and Services.
- Bryn Gordon, who will be studying a Certificate IV in Cybersecurity at TAFE.
- Ursula Warner, who will be studying a Certificate III in Applied Fashion Design and Technology.

Our senior students heading towards a University and school SACE completion pathway are preparing for major assessments and a very busy Term 3. Families and friends of our year 12 students will know they are hard at work and feeling the pressure of maintaining their wellbeing as the intensity of study increases towards the final stretch. Teachers are also here to support them through this time so please encourage students to seek support from staff where they need it.

### End of Semester 1 Reports

The end of week 8 signals the end of the first semester and the end of the assessment and reporting period for this term. Our students in Years 8-11 will have subject changes and new timetables.

These can be accessed via Daymap. End of semester reports will be available to parents and families via Daymap on Friday 2 July. If you require support to access the DayMap Parent Portal, click [here](#) to access the portal via our website.



### Year 7 to High School Re-Development

An update to our previous communications about the exciting redevelopment works! We have recently met with architects and finalised the floorplans for two refurbished buildings. We look forward to publishing these floorplans in a future newsletter. The planned spaces reflect contemporary learning design and an exciting opportunity to refresh learning environments around the school.

# Important information

## Attendance matters

As we head further into the academic year there has been an increase in absences and lateness from students. I would like to take this opportunity to impress upon all families the importance of regular attendance and punctuality to lessons for ongoing success in learning. Even though it may seem harmless, the adjacent table details the profound impact that lateness to school can have.

The Department for Education also sets an expectation that students are attending school a minimum of 95% of the time. Teachers regularly check attendance and follow up with families for students with ongoing attendance issues. If your child is absent for a day, please inform the school of the reason via phone call to the front office on 8360 6111 or via note to mentor teachers in the school diary.

For more information about absences and lateness processes please refer to our website or click [HERE](#).

Just a little bit late doesn't seem much, but...			
The student is only missing just...	That equals	Which is...	Over 13 years of schooling that's...
10 minutes/day	50 minutes/week	Nearly 1.5 weeks/year	Nearly <i>half a year</i>
20 minutes/day	1 hour 40 minutes/week	Over 2.5 weeks/year	Nearly <i>1 year</i>
Half an hour/day	Half a day/week	4 weeks/year	Nearly <i>1 and a half years</i>
1 hour per day	1 day/week	8 weeks/year	Over <i>2 and a half years</i>

## Staffing

The end of term changeover period heralds some staffing changes for our school:

- We would like to warmly thank Nikki Sheppard who has been backfilling Sam Davenport who was on Long Service Leave for this term. Nikki has developed wonderful relationships with students and we have appreciated her contributions to our school.
- We will also be welcoming a newly appointed English as an Additional Language teacher for Term 3, Ourania Svingos, who comes to us from the Adelaide Secondary School of English.
- We would like to welcome back to our site our former Aboriginal Community Education Transition Officer (ACETO), Robyn Coulthard.
- Congratulations to Jessica Brook who has won the Assistant Principal role until the end of the year. Beck Archer has also won the role of Literacy and English Coordinator until the end of the year.

# Important information

## TERM 2 - 2021



21 June

Semester 2 Starts



2 July

Early Dismissal 2.10pm  
reports distributed online



5 July

NAIDOC week  
5 July - 19 July

## TERM 3 - 2021



19 July

Student free day



28 July

Course Counselling



11 Aug

Finance Meeting  
Governing Council



### Do you have any spare time during the week?

Become a part of our growing canteen and help support your community! All it takes is a couple of hours a week. Primary tasks include food preparation and counter sales.

Contact Amanda, **Finance Officer**, on **8360 6111** to register your interest for more information. A current Working With Children Clearance Certificate will be required, however we can assist you in obtaining one.



For more information and to stay up to date, visit our website for:

[Term Calendar](#)

[News Feed](#)

[Student & Parent Handbook](#)

**FOLLOW US ON FACEBOOK**  
**VALLEY VIEW SECONDARY SCHOOL**



# Important information



## School Card Application Form 2021

### Material and Services Fees 2021

Reminder that all M&S Fees for 2021 are now overdue. Final Notices will be sent out over the next few weeks. If you are eligible for School Card assistance please click [HERE](#) to apply. If you would like to enter a payment agreement, please contact our Finance Officer Amanda Coombe on 8360 6111.



### PARENT PORTAL

Our easy-to-use system allows parents to create and manage their own accounts for Daymap Connect, requiring only one login and password per parents to access details for all students enrolled in the school. From your Parent Portal page, you'll be able to view attendance details, see homework requirements and access school messages and notices. VVSS uses Daymap for assessments and reports, which you will also be able to access. [valleyview.sa.edu.au/portal-links/](http://valleyview.sa.edu.au/portal-links/)

## UNIFORM CLEARANCE

Limited sizes available

SALE

*No refunds available, items may be swapped for another item*



### Unisex Parachute Pants

**\$15**

Size 8-3XL



### Girls & Ladies Straight or Bootleg Pants

**\$15**

Size 8-20



### Cargo Pants

**\$15**

Size S-L

### Cargo Shorts

**\$15**

Size 8-16 & S-2XL





# House point update

**2401**

**1869**

**1812**

**1699**

**PITMAN HOUSE**



**RAYMOND HOUSE**



**ARMAN HOUSE**



**FELLOWS HOUSE**



# Celebrating Achievement

## Term 1 2021 High Achievement



YEAR 8  
Reggy Boakye-Akwawua



YEAR 8  
Caitlin Harvey



YEAR 8  
Sophie Pearce



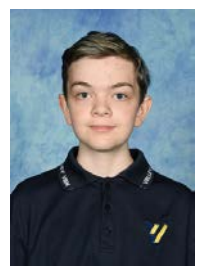
YEAR 9  
Robert (BJ) Luckhurst-Smith



YEAR 9  
Xandy Quigao



YEAR 9  
Bonnie Brown



YEAR 9  
Patrick Gaehl

## Term 1 2021 Outstanding Achievement



YEAR 10  
Shaima Iqbal



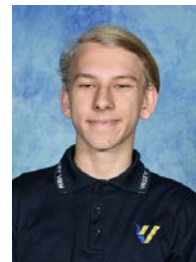
YEAR 11  
Angie Sim



YEAR 12  
Stars Kleinig



YEAR 8  
Clara Rehill



YEAR 12  
Thomas Jefferson

## Term 1 2021 Value Award Recipients



**ARMAN  
HOUSE**



Zidan Mustafat



Thomas Jefferson



**FELLOW  
HOUSE**



Shayla Kalaba



Stars Kleinig



**PITMAN  
HOUSE**



BJ Luckhurst-Smith



Lucas Shaw



**RAYMOND  
HOUSE**



Athanase Nizigiyimana



Angie Sim



Caleb Walkley



Brady Thompson-Pittock



Kailee Morris



COMMUNICATION



ATTITUDE



RESILIENCE



RESPONSIBILITY

# Career Pathway Education

## Career Awareness Program

Valley View Secondary School partnered with the University of South Australia (UniSA) Connect: Career Awareness Program, Journey Investigation Chat (CAPJIC).

In week 7 VVSS students in years 10 and 11 had one-on-one conversations with students from UniSA.

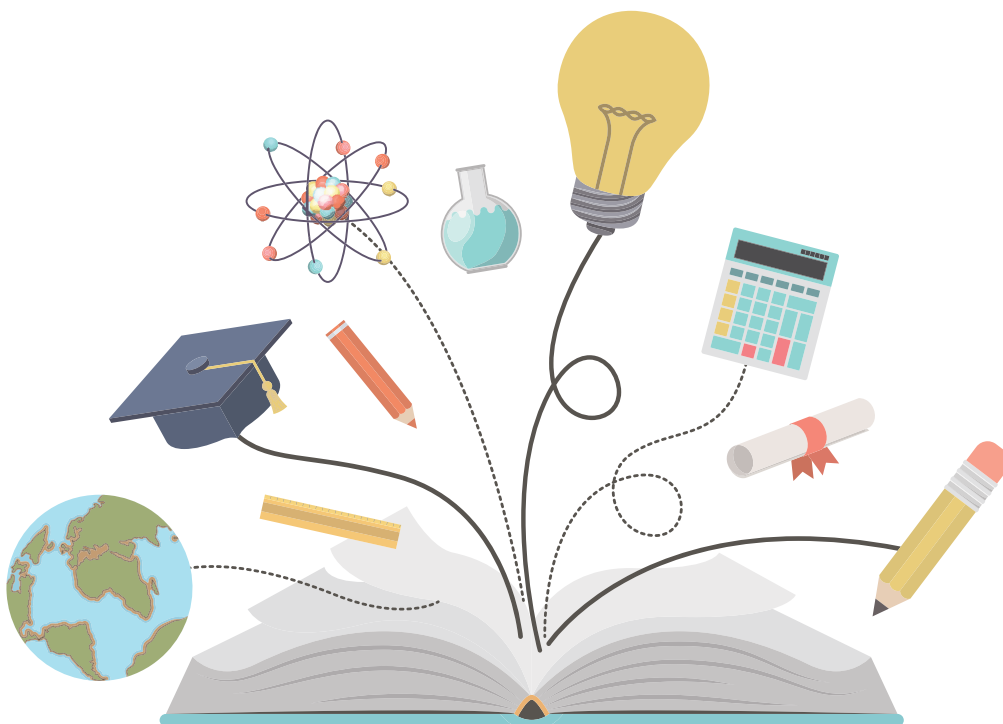
The CAPJIC sessions were to raise awareness and aspirations for future career pathways.

The aim of the investigation chat is to:

- Engage with University undergraduates/postgraduates
- Engage in skill-based conversations regarding career pathways, one-on one 30 minute conversations with UniSA Students
- Provide support with subject choices
- Enhance some of the PLP subject tasks (year 10 students)

Over the coming weeks students in year 8 to 12 are engaging in Pathway Education to support their decisions about subject and career choices.

More information will be sent out regarding course confirmation and how to book your session in the coming weeks.



YEAR 8 & 9	YEAR 10	YEAR 11	YEAR 12
TERM 2			
<b>WK 4</b> House Activity <i>Identity and Relationships</i>	<b>WK 4</b> Complete UniSA My Career Match Online <i>Work experience conversations</i>	<b>WK 4</b> House Activity <i>Identity and Relationships</i>	<b>WK 4</b> House Activity <i>Identity and Relationships</i>
<b>WK 6</b> House Activity <i>Identity and Relationships</i>	<b>WK 6</b> House Activity <i>Identity and Relationships</i>	<b>WK 6</b> Complete UniSA My Career Match Online <i>SACE Schools Online Check</i>	<b>WK 6</b> Career Aspirations <i>SACE Schools Online Check</i>
<b>WK 7</b> House Activity <i>Identity and Relationships</i>	<b>WK 7</b> River Journey Navigator Flinders Uni <i>Career skills, world of work</i> UniSA one-on-one conversation CAPJIC	<b>WK 7</b> River Journey Endeavor Flinders Uni <i>Career skills, world of work</i> UniSA one-on-one conversation CAPJIC	<b>WK 7</b> Career Aspirations <i>SACE Schools Online Check</i>
<b>WK 8</b> House Activity <i>Identity and Relationships</i>	<b>WK 8</b> TAFE SA <i>Presentation TBA</i>	<b>WK 8</b> Year 11 Transition <i>Presentation Uni SA</i>	<b>WK 8</b> Year 12 Admissions <i>Presentation Adelaide University</i>
	<b>WK 9</b> UniSA Career Match <i>Presentation</i>	<b>WK 9</b> Adelaide Uni <i>Presentation</i>	<b>WK 9</b> TAFE <i>Presentation</i>
TERM 3			
<b>WK 2</b> Introduction to Pathway Education Flinders University River Journey Explorer Yr8 River Journey Investigator Yr9 <i>Flinders Uni</i>	<b>WK 2</b> Adelaide University <i>Presentation TBA</i>	<b>WK 2</b> TAFE <i>Presentation</i>	<b>WK 2</b> Year 12 Admissions <i>Presentation UniSA</i>
<b>WK 3</b> House Activity	<b>WK 3</b> Course selection & career tools website	<b>WK 3</b> Course selection & career tools website	<b>WK 3</b> Year 12 Admissions <i>Presentation Flinders University</i>
<b>WK 4</b> House Activity	<b>WK 4</b> Course selection	<b>WK 4</b> Course selection	<b>WK 4</b> SATAC & TAFE <i>Presentation</i>
<b>WK 5</b> House Activity	<b>WK 5</b> Course Confirmation	<b>WK 5</b> Course Confirmation	<b>WK 5</b> SATAC & TAFE <i>Presentation</i>
<b>WK 10</b> House Activity	<b>WK 10</b> Work Experience <i>(as part of PLP)</i>		



# Building resilience in the garden

It is being increasingly recognised that nature conservation in the future will require a number of skills including resilience to challenges and change. Therefore, it is vital that as many opportunities as possible are offered to build upon the current skills and knowledge of our environmental leaders, including their ability to handle and adapt to challenges.

2020 was a year of unexpected challenges. The Coronavirus pandemic was a key issue that posed major barriers to schools continuing their existing environmental projects or beginning new ones. Nevertheless, many schools managed to continue their initiatives and saw the significant benefits of this to students, staff and the wider community.

## Valley View Secondary School

Students and staff have worked together over the last few years to create a garden that engages students in a range of outdoor learning opportunities. It is maintained by the student horticultural group, which has won awards through local council for all their hard work.

The garden program involves horticulture students from all year levels, supported by SSOs and grounds staff, who maintain and improve the garden on a weekly basis as part of their lesson time. They also plan and implement their own improvements to the garden, including adding native species, sensory plants and edible plants.

**"Nature can't be governed, and that has taught [the students] to be flexible when things don't go the way you expect. "- Loraine Pearce, SSO**

Despite the challenges faced in 2020 the garden is thriving, and students and staff have been able to use its tranquil and calming environment to rejuvenate, meditate or simply seek some time out.

## Well Being & Resilience



*The Valley View Secondary School wellbeing garden*

When the impacts of Coronavirus first started to become significant, teachers at the school took part in a guided meditation session in the garden. They overwhelmingly reported feeling much calmer and better equipped to deal with the challenges they faced.

Likewise, students have used the garden as a retreat not just to enjoy the space, but to work there and take their minds off other things. As student Billie-Jo reflected, "I have enjoyed the garden this year and planting new plants and vegetables. In general, the garden has helped me with keeping my mind well in coping with negative feelings and the many changes this year has brought."

SSO and garden coordinator Loraine Pearce said, "SA schools never fully shut down so we were able to continue running the program and tending to the garden. Because of the unknowns of everything, the garden has brought a sense of normality. Students who weren't in the garden program could see that this was still going on, which was comforting."

# Building resilience in the garden

Students directly involved in the program have really taken pride in being able to make such a difference to the school community.

"I enjoy tidying up to make the space look bright and welcoming," said student Balroop. "I also really enjoy making new friends on the team, and I can better manage my stress using the meditation practice learned in the garden program."

"For students, the garden is an opportunity to take a break from thinking," said Loraine. "It reminds them that there is a space within them where they can retreat and it gives them a sense of belonging, especially if they have very complex lives. They can also see the results of their particular actions such as, 'I planted that seed as tube stock and now it's a 1 metre tree!'"

## Other Benefits and Outcomes

Along with the garden space being used as a central location for wellbeing, students have been able to link their studies to environmental topics. The Year 12 Community Studies class has been able to use the garden as a focus for many small projects and investigations. One student did a major assessment project specifically on garden maintenance and improvement, including planning for a worm farm and creating a native plant catalogue.



*The garden provides a relaxing and comforting space*

Through doing this work, not only is the program creating welcoming spaces for people, but for native wildlife too. The garden is regularly visited by native birds, butterflies and other species. It is becoming more important all the time to create increased green spaces in and around urban environments to support native wildlife, and the garden at Valley View certainly does this well.

The program is increasingly opening up opportunities to expand students' skills and career pathways into both horticulture, and the planning and community aspect of creating a shared garden space. Student Harrison said, "being on the garden program has helped me build strong friendships. The garden can be physically demanding but we have fun while working. Working with other community volunteers has helped me learn about the various plant species and when to mulch."

Student Jocelynn added, "I look at the garden as a reward for my hard work in my studies and have discovered my love for the outdoors. I particularly enjoy working with my hands and being out in nature. The wellbeing practise done in the garden helps me with my anxiety and to be relaxed. I am finding I can be more in tune with my surroundings and be myself, and that's okay."

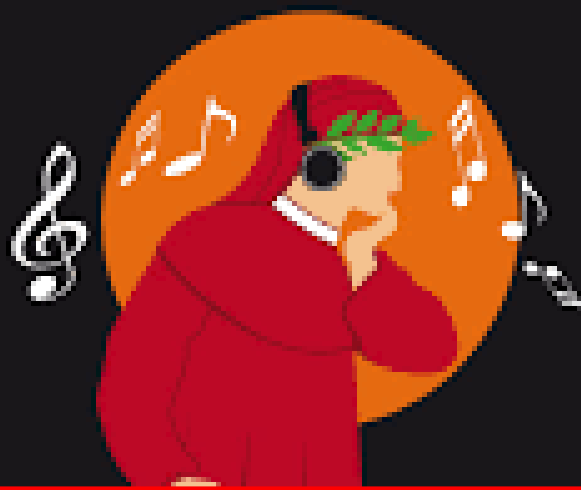
### More information

For similar case studies and to contact your local Green Adelaide Education office visit

<https://www.environment.sa.gov.au/topics/green-adelaide/for-educators>



VALLEY VIEW  
SECONDARY SCHOOL  
— Every Student Matters —



VALLEY VIEW SECONDARY SCHOOL PRESENTS

# The Divine Comedy

## BOOKINGS ESSENTIAL

Thursday 9 September,  
5.30pm

CLICK HERE TO  
BOOK NOW

This is a  
FREE event

or visit: <http://thedivinecomedy.eventbrite.com.au>

Come along and watch this unique performance in English and Italian, as our students embark on a modern, hilarious journey through Inferno (hell), Purgatorio (purgatory), & Paradiso (paradise) with a touch of contemporary music.

**LIVE  
MUSIC**

from Dualita'  
– Michela  
Capriccioni &  
Davide Bonanni



Divine? Not sure.... Comedy? Definitely!!!!



# With Love Formal Wear



## With Love Formal Wear Inc

📍 1 Hardwick Court Golden Grove

✉ [joss@withloveformalwear.com](mailto:joss@withloveformalwear.com)

☎ 0458644776

Formals and graduations are events young people look forward to each year. But what do young people do when they can't afford to purchase formal wear???

Well there's no need to worry any longer! With Love Formal Wear is a non for profit charity based in Salisbury South that gifts pre-loved formalwear to Year 7 and 12 students.

Our monthly event provides free formal and graduation attire for school events aimed at making formals affordable and memorable. This includes helping students with clothing, shoes, accessories, and makeup.

Any Year 7 or 12 student that needs our service is most welcome to attend. We operate on the honor system, so no proof of financial difficulty is necessary.

All formal wear has been generously donated by community members. It's a heart (With Love) to heart donation. We have a large range of woman's wear size 6-26 and a variety of men's suits.

The boutique also offers 1:1 session for young people with disabilities on alternative dates, giving them a quiet, low sensory environment.

The committee has a strong connection with Support Services at Para Hills Channel 1, with 4 of our members being either Special Educators or Behaviour Coaches.

The team are focused on the principle "It takes a village to raise a child".

In 2020 we helped dress 150 students. This year we would love to help many more. We hope you will promote this with your staff, students and families via newsletters and social media.

Our events are Covid safe with booking essential. I have attached a gift certificate that can be shared with students and families.

If you would like further information please contact Joss Adele at [joss@withloveformalwear.com](mailto:joss@withloveformalwear.com) or

Check us out on FB <https://www.facebook.com/withloveformalwear/>